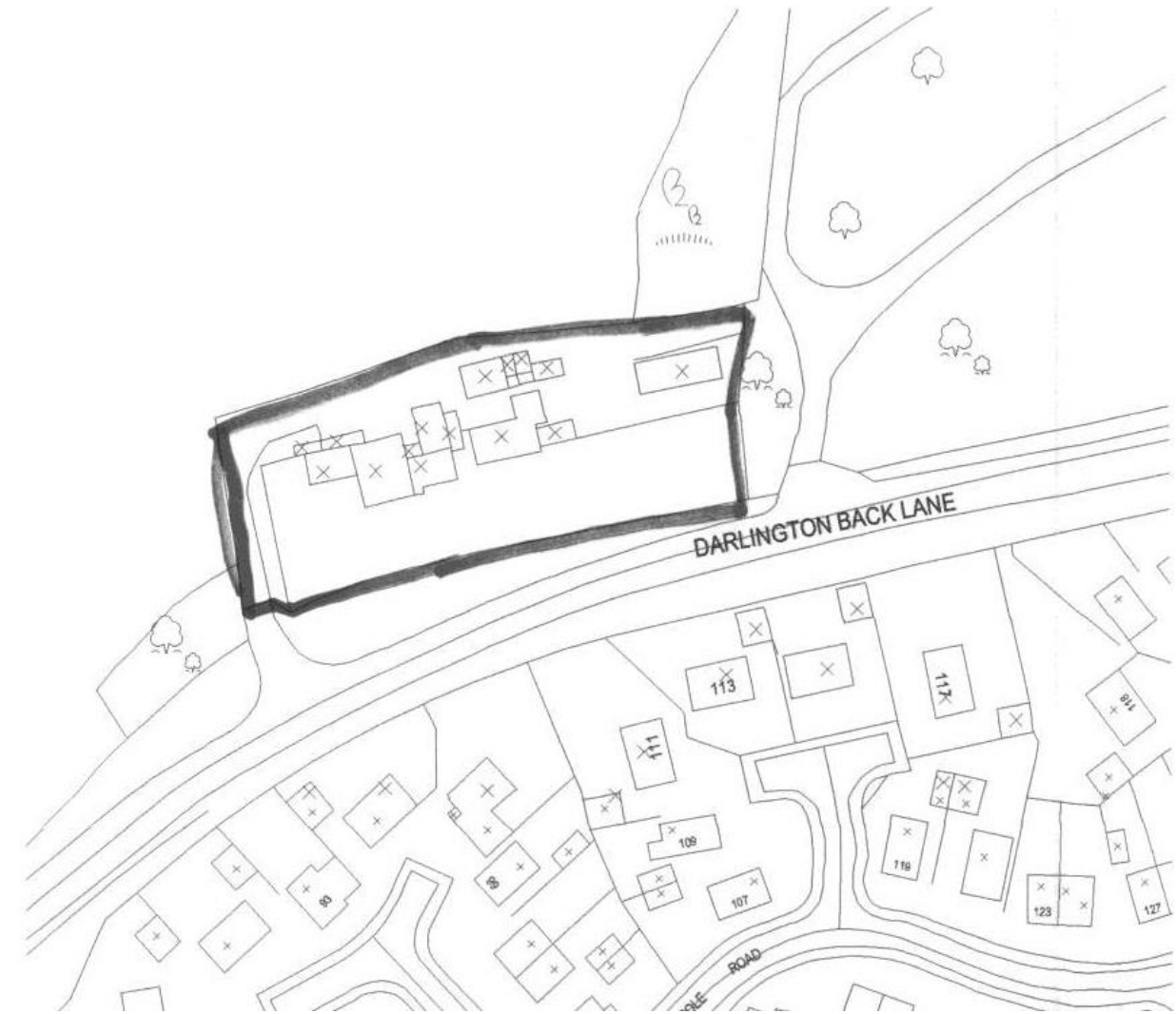


07/2319/ARC – Bishopsgarth Cottages
Appendix reference 1. SITE LOCATION PLAN



Appendix reference 2. DIFFERENCES BETWEEN AS BUILT AND AS APPROVED PLANS



06/2771/VARY and 06/0461/REV (as approved)



Figure 2 - Dwelling One North Elevation (scale 1:100)

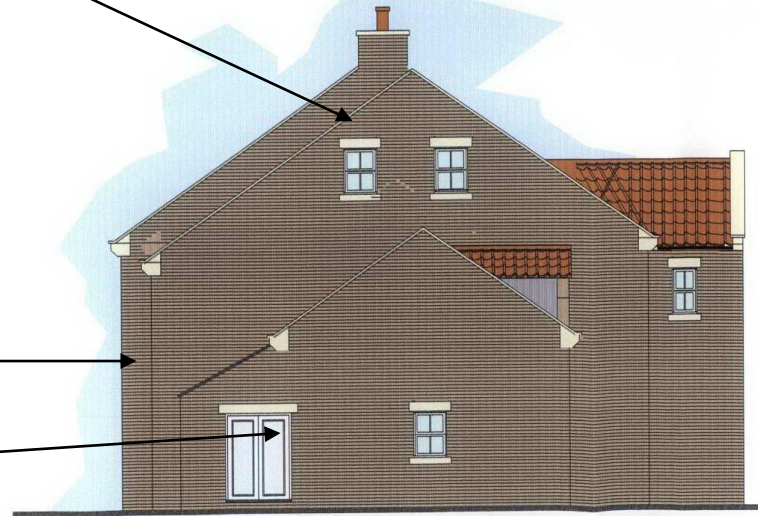
DWELLING ONE –

07/2319/ARC Submission (as built)

Additional window and amended position

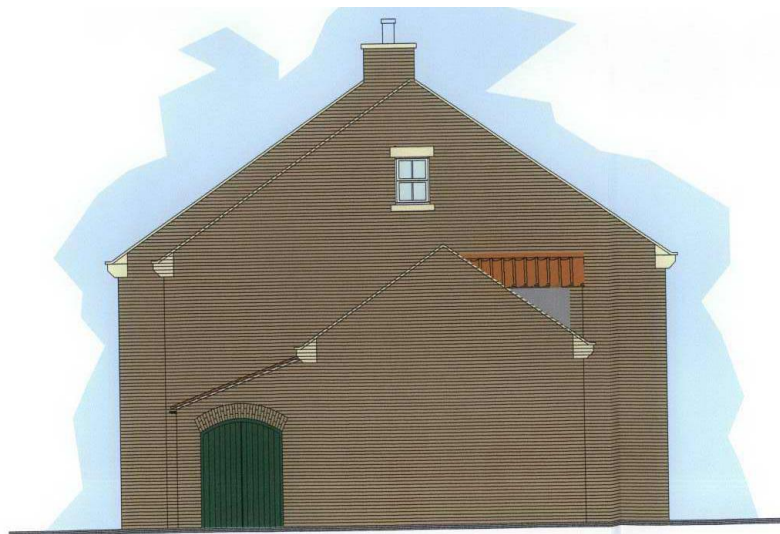
Reduced step in elevation

Additional window and change to door type



06/2771/VARY (as approved)

(please note: although the projecting gable to the rear was not shown on elevation it was included on floor plan details)



DWELLING ONE –
07/2319/ARC Submission

Brick courses above windows

Removal of door

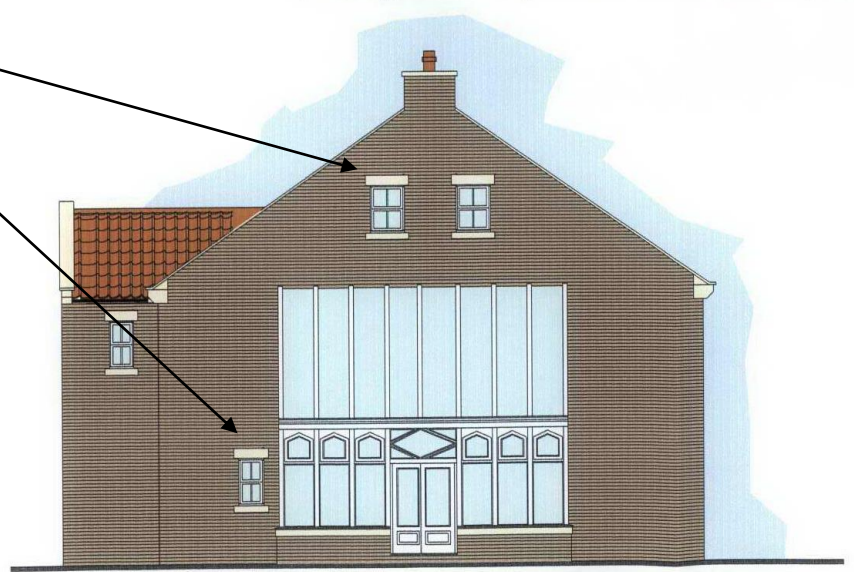


06/2771/VARY (as approved)



**DWELLING ONE –
07/2319/ARC Submission (as built)**

Additional / amended
windows

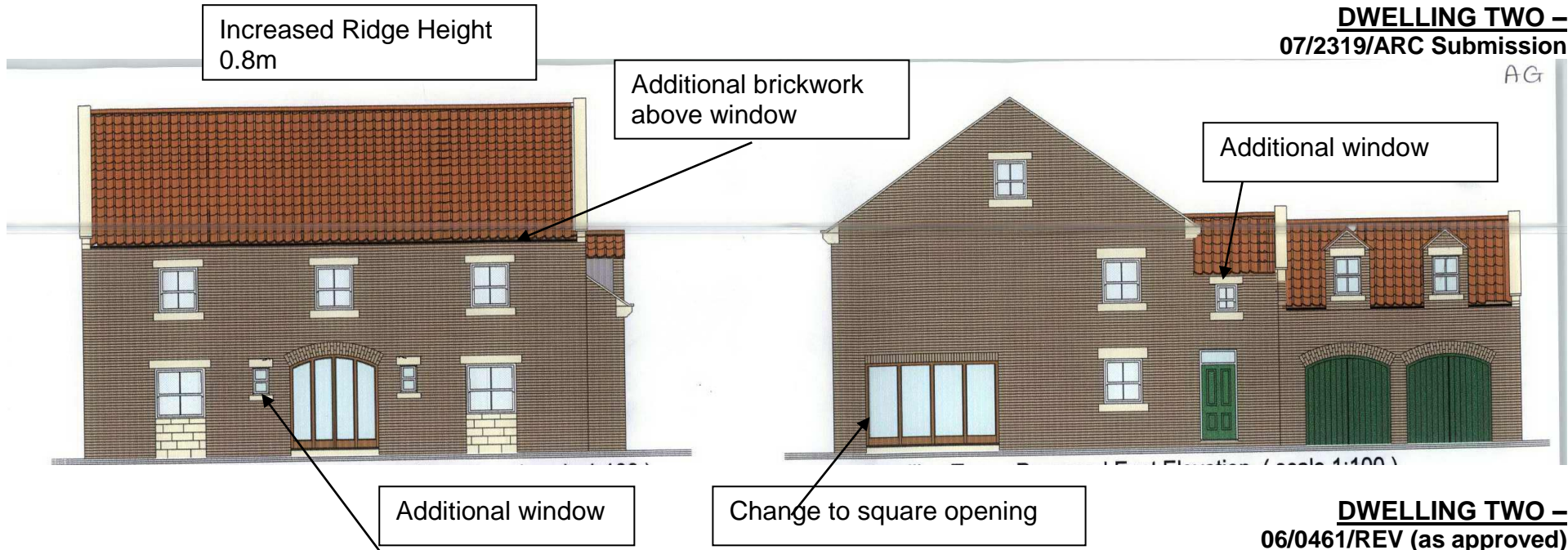


06/2771/VARY (as approved)



**DWELLING TWO –
07/2319/ARC Submission**

AG



**DWELLING TWO –
06/0461/REV (as approved)**

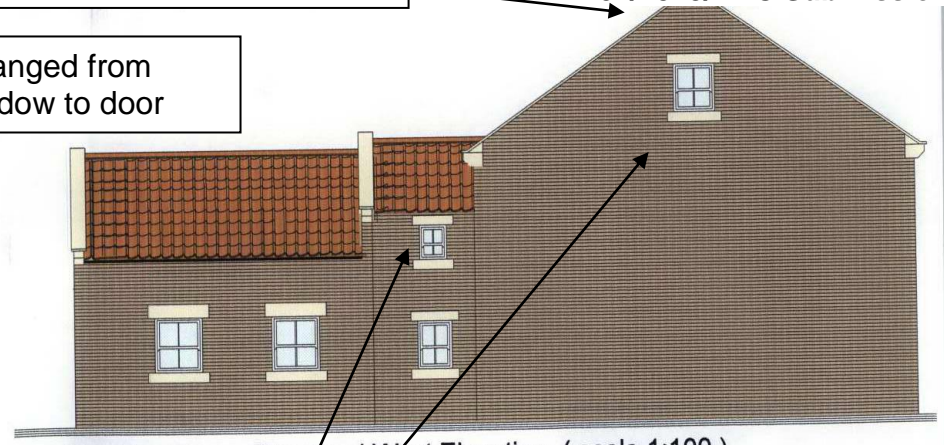
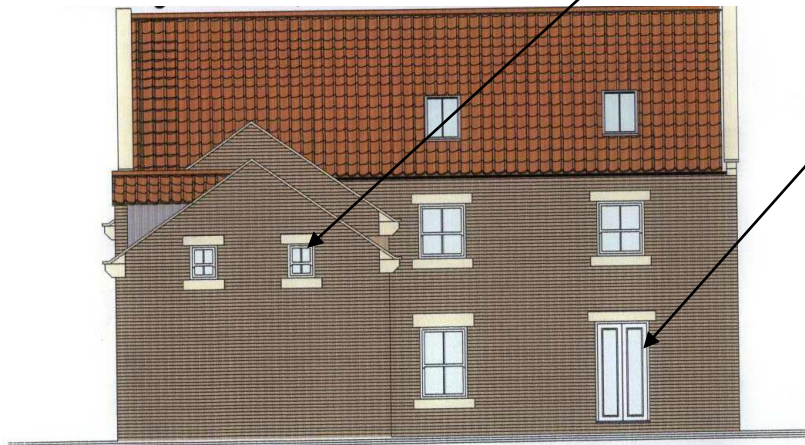


Additional windows

Increased Ridge height

**DWELLING TWO –
07/2319/ARC Submission**

Changed from
window to door



Dwelling Two - Proposed West Elevation (scale 1:100)

Additional window and
change to window size.

**DWELLING TWO –
06/0461/REV (as approved)**



Dwelling Two - Proposed West Elevation (scale 1:100)